

Annie's Attic®

CROCHET

Casserole

Covers™



by CYLINDA MATHEWS

Great for
potlucks, parties
and family
reunions!



6 irresistible
designs!



Casserole Covers

Covers™

Loopy Loops

SKILL LEVEL



INTERMEDIATE

FINISHED SIZE

Fits 3-quart oval $3\frac{1}{8}$ x $8\frac{1}{8}$ x 11-inch baking dish

MATERIALS

- Pisgah Yarn & Dyeing Co. Peaches & Creme medium (worsted) weight yarn (solids: $2\frac{1}{2}$ oz/122 yds/71g per ball):
 - 2 balls #7 ivory
 - 1 ball each #52 light sage and #56 celery
- Sizes H/8/5mm and I/9/5.5mm crochet hooks or size needed to obtain gauge
- 2-inch wooden rings: 2
- Stitch markers



GAUGE

Size H hook: 2 dc rnds = $1\frac{1}{2}$ inches

PATTERN NOTES

Hold 2 strands of yarn together unless otherwise stated.

Join with slip stitch as indicated unless otherwise stated.

Chain-3 at beginning of row or round counts as first double crochet unless otherwise stated.



INSTRUCTIONS**COVER****FIRST RING**

With size H hook and light sage, ch 12, sl st in first ch to form ring, being careful not to twist ch, ch 1, 2 hdc in each of first 5 chs, ch 1, 2 hdc in next ch, ch 1, 2 hdc in each of next 5 chs, ch 1, 2 hdc in last ch, ch 1, **join** (see *Pattern Notes*) in beg hdc. Fasten off.

Mark next to last ch-1 sp for later placement.

NEXT RING

With size H hook and celery, ch 12, pull end of ch through center of last Ring from bottom up, sl st in first ch to form ring, being careful not to twist ch, ch 1, 2 hdc in each of first 5 chs, ch 1, 2 hdc in next ch, ch 1, 2 hdc in each of next 5 chs, ch 1, 2 hdc in last ch, ch 1, **join** in beg hdc. Fasten off.

Mark next to last ch-1 sp for later placement.

Rep Next Ring 17 times, alternating light sage and celery for total of 20 Rings.

LAST RING

Using color needed and size H hook, ch 12, pull end of ch through center of last Ring from bottom up, and then pull end through First Ring, forming circle of Rings, sl st in first ch to form ring, being careful not to twist ch, ch 1, 2 hdc in each of first 5 chs, ch 1, 2 hdc in next ch, ch 1, 2 hdc in each of next 5 chs, ch 1, 2 hdc in last ch, ch 1, **join** in beg hdc. Fasten off.

BOTTOM

Rnd 1: Holding 2 strands (see *Pattern Notes*) of ivory and with size I hook, ch 13, 4 dc in 4th ch from hook (*first 3 chs count as first dc*), dc in each of next 8 chs, 5 dc in last ch, working on opposite side of ch, dc in each of next 8 chs, **join** in 3rd ch of beg ch-2. (26 dc)

Rnd 2: Ch 3 (see *Pattern Notes*), dc in same st, 2 dc in each of next 4 sts, dc in each of next 8 sts, 2 dc in each of next 5 sts, dc in each of last 8 sts, **join** in 3rd ch of beg ch-3. (36 dc)

Rnd 3: Ch 3, dc in same st, 2 dc in each of next 9 sts, dc in each of next 8 sts, 2 dc in each of next 10 sts, dc in each of last 8 sts, **join** in 3rd ch of beg ch-3. (56 dc)

Rnd 4: Ch 3, dc in same st, 2 dc in each of next 4 sts, *dc in each of next 10 sts, 2 dc in each of next 5 sts, dc in each of next 3 sts, 2 dc in each of next 2 sts, dc in each of next 3 sts*, 2 dc in each of next 5 sts, rep between * once, **join** in 3rd ch of beg ch-3. Fasten off. (80 dc)

SIDE

With WS of Bottom facing and size I hook, lay circle of Rings RS facing on top, **join** in marked ch-1 sp on any Ring, ch 3, sl st in first st on Bottom, dc in same ch-1 sp on Ring, sl st in next dc on Bottom, dc in next ch-1 sp on same Ring, sl st in next st on Bottom, dc in same ch-1 sp on Ring, sl st in next dc on Bottom *dc in marked ch-1 sp on Next Ring, sl st in next dc on Bottom, dc in same ch-1 sp on same Ring, sl st in next dc on Bottom, dc in next ch-1 sp on same Ring, sl st in next dc on Bottom, dc in same ch-1 sp on Ring, sl st in next dc on Bottom, rep from * around, **join** in 3rd ch of beg ch-3. Fasten off.

HANDLE**MAKE 1 LIGHT SAGE AND 1 CELERY.**

Working around 1 wooden ring, with 1 strand and size H hook, **join** with sc in ring, ch 2, 2 sc in ring, ch 2, 29 sc in ring, **join** in beg sc. Fasten off. (2 ch-2 sps, 32 sc)

UPPER SIDE & HANDLE JOINING

With size I hook, **join** ivory in first ch-1 sp on first Ring at narrow end of Cover, ch 3, dc in same ch sp, *working through both thicknesses, 2 dc in ch-2 sp on Handle and next ch-1 sp on same Ring, 2 dc in next ch-2 sp on Handle and next ch-1 sp on next Ring, 2 dc in next ch-1 sp on same ring, 2 dc in each ch-1 sp on next 8 Rings*, 2 dc in first ch-1 sp on next Ring, rep between * once, **join** in 3rd ch of beg ch-3. Fasten off.

FIRST FLAP

Row 1: Working in **back lps** (see *Stitch Guide*), with size I hook, **join** ivory in 6th st before 1 Handle is joined on narrow end of Cover, ch 3, dc in each of next 15 sts, leaving rem sts unworked, ending in 6th dc after last st of same Handle, turn. (16 dc)



Row 2: Ch 3, dc dec (*see Stitch Guide*) in next 2 sts, dc in each of next 10 sts, dc dec in next 2 sts, dc in last st, turn. (14 dc)

Row 3: Ch 3, dc dec in next 2 sts, dc in each of next 8 sts, dc dec in next 2 sts, dc in last st, turn. (12 dc)

Row 4: Ch 3, dc dec in next 2 sts, dc in each of next 6 sts, dc dec in next 2 sts, dc in last st, turn. (10 dc)

Row 5: Ch 3, dc dec in next 2 sts, dc in each of next 4 sts, dc dec in next 2 sts, dc in last st, turn. (8 dc)

Row 6: Ch 3, dc dec in next 2 sts, dc in each of next 2 sts, dc dec in next 2 sts, dc in last st, turn. (6 dc)

Row 7: Ch 1, sc in each st across. Fasten off.

2ND FLAP

Row 1: Working in back lps, with size I hook, sk next 24 sts on Cover from First Flap, ch 3, dc in each of next 15 sts, ending in 6th dc after last st of same Handle, leaving rem sts unworked, turn. (16 dc)

Rows 2-7: Rep rows 2-7 of First Flap.

TIE

Holding 1 strand of light sage and 1 strand of celery tog, with size I hook, ch 75. Fasten off.

EDGING

With size I hook, join ivory in any st on last rnd of Cover, sl st in each st around, working in **front lps** (see *Stitch Guide*) across bottom edges of Flaps, join in beg sl st. Fasten off.

FINISHING

Place casserole dish in Cover, fold Flaps up over lid. Weave Tie through row 6 of 1 Flap, working under first st, over dc dec, under center 2 dc, over next dc dec and under last st.

Continue to weave through opposite Flap as for First Flap and tie ends in bow around knob on lid. ■

Summer Fun

**SKILL LEVEL**

INTERMEDIATE

FINISHED SIZE

Fits 3-quart 2¼ x 9¼ x 13¼-inch baking dish

MATERIALS

- Pisgah Yarn & Dyeing Co. Peaches & Creme medium (worsted) weight yarn (solids: 2½ oz/122 yds/71g per ball):
 - 2 balls #10 yellow
 - 1 ball #51 apple green
- Size J/10/6mm crochet hook or size needed to obtain gauge
- 3 x 5-inch ivory swirl designer bag handles



MEDIUM

GAUGE

2 sc rows = ¾ inch; 2 dc rows = 1¾ inches

PATTERN NOTES

Join with slip stitch as indicated unless otherwise stated.

Chain-3 at beginning of row or round counts as first double crochet unless otherwise stated.



INSTRUCTIONS

COVER BOTTOM

Row 1: With apple green, ch 20, sc in 2nd ch from hook and in each ch across, turn. (19 sc)

Rows 2-29: Ch 1, sc in each st across, turn.

Rnd 30: Working in sts and in ends of rows, ch 1, sc in each of first 19 sts, ch 3, sc in end of each row across, ch 3, working in starting ch on opposite side of row 1, sc in each ch across, ch 3, sc in end of each row across, ch 3, **join** (see *Pattern Notes*) in beg sc. Fasten off. (4 ch-3 sps, 96 sc)

SIDES

Rnd 1: Working in back lps (see *Stitch Guide*), with RS of Bottom facing, join yellow in first sc on 1 long edge of Bottom at corner,

ch 3 (see *Pattern Notes*), dc in each of next 3 sts, *[ch 1, sk next st, dc in each of next 4 sts] 5 times, sk next ch-3 sp, dc in each of next 4 sts, [ch 1, sk next st, dc in each of next 4 sts] 3 times, sk next ch-3 sp*, dc in each of next 4 sts, rep between * once, join in 3rd ch of beg ch-3. (16 ch-1 sps, 80 dc)

Rnd 2: Ch 3, dc in each of next 3 sts, sk all ch-1 sps, [ch 1, dc in each of next 4 sts] around, ch 1, join in 3rd ch of beg ch-3.

Rnd 3: Ch 3, dc in each of next 3 sts, sk all ch-1 sps, [ch 1, dc in each of next 4 sts] 6 times, ch 11, sk next 11 sts including chs (*handle opening*), dc in each of next 4 sts, [ch 1, dc in each of next 4 sts] 7 times, ch 11, sk next 11 sts including chs (*handle opening*), dc in each of next 4 sts, ch 1, join in 3rd ch of beg ch-3. (2 ch-11 sps, 14 ch-1 sps, 64 dc)

Rnd 4: Ch 1, sc in each of first 4 sts, [sc in next ch-1 sp, sc in each of next 4 sts] 6 times, sc in each of next 11 chs, sc in each of next 4 sts, [sc in next ch-1 sp, sc in each of next 4 sts] 7 times, sc in each of next 11 chs, sc in each of next 4 sts, sc in last ch-1 sp, join in beg sc. (100 sc)

FIRST FLAP

Row 1: Ch 3, dc in each of next 3 sts, [ch 1, sk next st, dc in each of next 4 sts] 5 times, leaving rem sts unworked, turn. (5 ch-1 sps, 24 dc)

Rows 2 & 3: Ch 3, dc in each of next 3 sts, sk all ch-1 sps, [ch 1, dc in each of next 4 sts] across, turn.

Row 4: Ch 1, sc in each of first 4 sts, [sc in next ch sp, sc in each of next 4 sts] across, turn. (29 sc)

Row 5: Ch 1, sl st in each of first 6 sts, ch 3, dc in each of next 3 sts, [ch 1, sk next st, dc in each of next 4 sts] 3 times, leaving rem sts unworked, turn. (3 ch-1 sps, 16 dc)

Rows 6 & 7: Ch 3, dc in each of next 3 sts, sk all ch-1 sps, [ch 1, dc in each of next 4 sts], turn.

Row 8: Ch 1, sc in each of first 4 sts, [sc in next ch-1 sp, sc in each of next 4 sts] across, turn. (19 sc)

Row 9: Ch 1, sl st in each of first 2 sts, sl st in front lp (see *Stitch Guide*) of next st, working in front lps, ch 3, dc in next st, [ch 1, sk next st, dc in each of next 4 sts] twice, ch 1, sk next st, dc in each of next 2 sts, leaving rem sts unworked, turn. (3 ch-2 sps, 12 dc)

Row 10: Ch 3, dc in next st, sk all ch-1 sps, [ch 1, dc in each of next 4 sts] twice, ch 1, dc in each of last 2 sts, turn. Pull up lp and drop lp from hook to be picked up later.

TOP TRIM

Join apple green in first unworked ch-1 sp between dc groups on row 5 of Flap, ch 5, sl st in front lp of corresponding unworked sc on row 8, ch 5, sl st in front lp of next unworked sc between dc groups on row 8 of Flap, ch 5, sl st in next ch-1 sp on row 5, ch 5, sl st in same st on row 8 of flap, ch 5, sl st in front lp of next

unworked sc between dc groups on row 8, ch 5, sl st in next ch-1 sp on row 5. Fasten off.

CENTER TRIM

Join apple green in first unworked ch-1 sp between dc groups on row 1 of Flap, ch 5, sl st in corresponding sc before first dc group on row 4, [ch 5, sl st in next unworked sc on row 4 between next dc group, ch 5, sl st in next unworked ch-1 sp on row 1, ch 5, sl st in same st on row 4] 3 times, ch 5, sl st in next unworked sc after dc group on row 4, ch 5, sl st in next unworked ch-1 sp between dc groups on row 1. Fasten off.

BOTTOM TRIM

Working in Side of Cover, sk first dc group at long narrow side of Cover, join apple green between next dc groups on rnd 1 using Flap for reference, ch 5, sc in corresponding st on rnd 4, [ch 5, sl st in next unworked sc on rnd 4, ch 5, sl st in next unworked ch-1 sp on rnd 1, ch 5, sl st in same st on rnd 4] 3 times, ch 5, sl st in next unworked sc on rnd 4, ch 5, sl st in next ch-1 sp on rnd 1. Fasten off.

FIRST FLAP CONTINUED

Row 11: Pick up dropped lp from row 10, fold row 10 to inside over 1 handle, matching sts of last row with rem lps of row 8, ch 1, sc in rem lp across. Fasten off.

Pull handle up and slide work into place where joining is at bottom of handle.

2ND FLAP

Row 1: Sk next 21 sts from First Flap on rnd 4 of Sides, join yellow in next st, ch 3, dc in each of next 3 sts, [ch 1, sk next st, dc in each of next 4 sts] 5 times, leaving rem sts unworked, turn. (5 ch-1 sps, 24 dc)

Rows 2–11: Rep rows 2–11 of First Flap, including all Trim.

FINISHING

Insert baking dish, pull Flaps up and over top.

Insert utensils through Bottom and Center Trims as shown in photo. ■

Southwestern

SKILL LEVEL



EASY

FINISHED SIZE

Fits 9-inch square baking dish

MATERIALS

- Pisgah Yarn & Dyeing Co. Peaches & Creme medium (worsted) weight yarn (solids: 2½ oz/122 yds/71g per ball):
 - 2 balls #90 beige
 - 1 ball #20 teal
- Size I/9/5.5mm crochet hook or size needed to obtain gauge
- Tapestry needle
- ¾-inch 13-inch dowel: 2
- Mini candle cups to fit dowel: 4
- Teal paint (optional)



GAUGE

5 sc = 2 inches; 4 rows = 1¼ inches

PATTERN NOTES

Join with slip stitch as indicated unless otherwise stated.

Each square on charts equals 1 single crochet.

INSTRUCTIONS

COVER

SIDES

Rnd 1: With beige, ch 92, sl st in first ch to form ring, being careful not to twist ch, ch 1, sc in each ch around, **join** (see *Pattern Notes*) in beg sc. (92 sc)



Rnds 2-7: Ch 1, sc in each st around, join in beg sc.

FIRST HANDLE

Row 1 (RS): Now working in rows and in back lps (see *Stitch Guide*), ch 1, sc in each of first 23 sts, leaving rem sts unworked, turn. (23 sc)

Rows 2-17: Ch 1, sc in each st across, turn.

FIRST LOOP

Row 1 (WS): Working in back lps, ch 1, sc in each of first 7 sts, leaving rem sts unworked, turn. (7 sc)

Rows 2-5: Ch 1, sc in each st across, turn.

Row 6: Fold First Loop to inside, working in rem lps of row 17 on First Handle, sl st in each st across. Fasten off.

2ND LOOP

Row 1 (WS): Sk next 9 sts on row 17 of First Handle, working in back lps, join with sc in next st, sc in each of last 6 sts, turn. (7 sc)

Rows 2-6: Rep rows 2-6 of First Loop.

2ND HANDLE

Row 1: With RS facing, sk next 23 sts on row 17 of Sides, working in back lps, join with sc in next st, sc in each of next 22 sts, leaving rem sts unworked, turn.

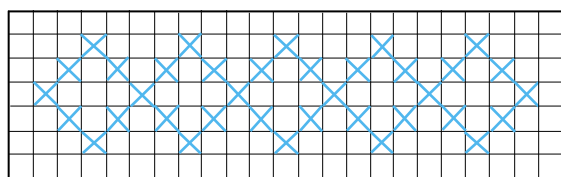
Rows 2-17: Ch 1, sc in each st across, turn.

FIRST LOOP

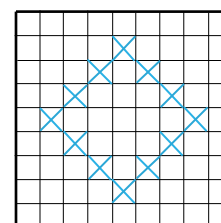
Rep First Loop of First Handle.

2ND LOOP

Rep 2nd Loop of First Handle.



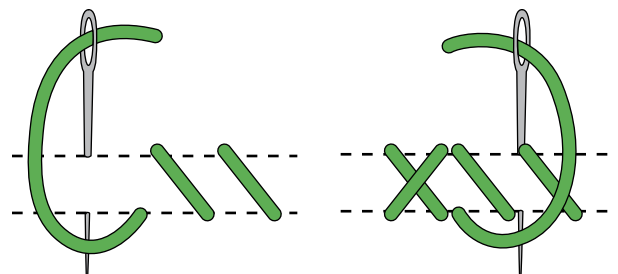
Southwestern Casserole Cover
Chart A



Southwestern Casserole Cover
Chart B

EMBROIDERY

Using **cross stitch** (see illustration), with teal, embroider design according to Chart A (see *Pattern Notes*) centered on each Side without Handle and Chart B centered on each Handle as shown in photo.



Cross-Stitch

BOTTOM

Row 1: With teal, ch 24, sc in 2nd ch from hook and in each ch across, turn. (23 sc)

Rows 2-23: Ch 1, sc in each st across, turn.

JOINING

Holding Sides and Bottom tog with Handle sides to ends of rows on Bottom, working through both thicknesses, matching corner to corner and using Handles for reference, [ch 1, sc in each st across to next corner, ch 1, working in ends of rows, sc in end of each row across to next corner] twice, join in beg sc. Fasten off.

FINISHING

Optional: Paint dowels and mini candle cups teal. Let dry completely.

Insert dowels through the Loops at top of Handles and place mini candle cups on each end of each dowel. ■

Chili Peppers

SKILL LEVEL



INTERMEDIATE

FINISHED SIZE

Fits 2½-quart round casserole dish with straight sides.

MATERIALS

- Pisgah Yarn & Dyeing Co. Peaches & Creme medium (worsted) weight yarn (solids: 2½ oz/122 yds/71g per ball):
2 balls #89 camel
- Red Heart Classic medium (worsted) weight yarn (3½ oz/190 yds/99g per skein):
1 oz/50 yds/28g each
#762 claret and
#631 light sage
- Sizes G/6/4mm and H/8/5mm crochet hooks or size needed to obtain gauge
- Small amount raffia straw



GAUGE

Size H hook: 2 dc rnds = 1½ inches

PATTERN NOTES

Hold 2 strands of yarn together throughout unless otherwise stated.

Join with slip stitch as indicated unless otherwise stated.

Chain-3 at beginning of row or round counts as first double crochet unless otherwise stated.

INSTRUCTIONS

COVER BOTTOM

Rnd 1: With size H hook and camel, ch 4, 11 dc in 4th ch from hook (*first 3 chs count as first dc*), join (*see Pattern Notes*) in 3rd ch of beg ch-4. (12 dc)

Rnd 2: Ch 3 (*see Pattern Notes*), dc in same st, 2 dc in each st around, join in 3rd ch of beg ch-3 (24 dc)

Rnd 3: Ch 3, 2 dc in next st, [dc in next st, 2 dc in next st] around, join in 3rd ch of beg ch-3. (36 dc)

Rnd 4: Ch 3, dc in next st, 2 dc in next st, [dc in each of next 2 sts, 2 dc in next st] around, join in 3rd ch of beg ch-3. (48 dc)

Rnd 5: Ch 3, dc in each of next 2 sts, 2 dc in next st, [dc in each of next 3 sts, 2 dc in next st] around, join in 3rd ch of beg ch-3. (60 dc)

Rnd 6: Ch 1, sc in each st around, join in **back lp** (see *Stitch Guide*) of beg sc.

SIDES

Rnd 7: Working in back lps, ch 3, dc in each st around, join in 3rd ch of beg ch-3.

Rnd 8: Ch 3, dc in each of next 3 sts, fpdc (see *Stitch Guide*) around next st, [dc in each of next 4 sts, fpdc around next st] around, join in 3rd ch of beg ch-3.

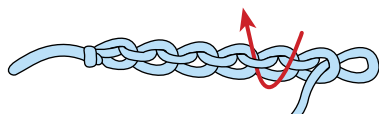
Rnds 9–11: Ch 3, dc in each of next 3 sts, fpdc around next fpdc, [dc in each of next 4 sts, fpdc around next st] around, join in 3rd ch of beg ch-3.

Rnd 12: Working from left to right, ch 1, reverse sc (see *Stitch Guide*) in each st around, join in beg reverse sc. Fasten off.

FIRST HANDLE

Row 1: With size H hook, join camel around post of any fpdc, loosely ch 20, sk next post st on same rnd, sl st around post of next fpdc, turn.

Row 2: Working back across ch, ch 1, sl st in **back bar** (see *illustration*) of each ch across, sl st in joining sl st of last row. Fasten off.



Back Bar of Chain

2ND HANDLE

Row 1: With size H hook, sk next 3 fpdc on rnd 11 of Sides, join camel around post of next fpdc, loosely ch 20, sk next post st on same rnd, sl st around post of next fpdc, turn.

Row 2: Rep row 2 of First Handle.

CHILI PEPPER

MAKE 4.

STEM

Rnd 1: With size G hook and 1 strand light sage, ch 2, 6 sc in 2nd ch from hook, join in **front lp** (see *Stitch Guide*) of beg sc. (6 sc)

Rnd 2: Working in front lps, ch 2, sl st in same st, (sl st, ch 2, sl st) in each st around, **do not join**. Fasten off.

CHILI PEPPER

Rnd 3: With size G hook, join 1 strand claret in rem lp of any st on rnd 1 of Stem, working in rem lps, ch 3, dc in same st, 2 dc in each st around, join in 3rd ch of beg ch-3. (12 dc)

Rnd 4: Ch 2 (*does not count as first st*), dc in next st, [dc dec (see *Stitch Guide*) in next 2 sts] around, join in beg dc. (6 dc)

Rnd 5: Ch 3, dc dec in next 2 sts, dc in next st, dc dec in last 2 sts, join in 3rd ch of beg ch-3. Fasten off. (4 dc)

FINISHING

Holding 2 or 3 strands raffia straw tog, pull 1 end through ch-2 sp on Stem of Chili Pepper and pull the rem end of raffia straw through ch-2 sp on 2nd Chili Pepper. Tie raffia straw in knot.

Pull 1 end of raffia straw through rnd 11 on Cover next to 1 Handle, sk next 2 sts on Cover and pull opposite end of raffia straw through next st, tie ends in bow. Trim ends.

Rep with rem Chili Peppers on other Handle. ■

Touch of Cinnamon

SKILL LEVEL



INTERMEDIATE

FINISHED SIZE

Fits 2½-quart round casserole dish with straight sides.

MATERIALS

- Pisgah Yarn & Dyeing Co. Peaches & Creme medium (worsted) weight yarn (solids: 2½ oz/122 yds/71g; ombres: 2 oz/98 yds/57g per ball): 2 balls each #4 ecru and #132 earth tone
- Size I/9/5.5mm crochet hook or size needed to obtain gauge
- 3½-inch cinnamon sticks: 14
- Dried apple slices: 4
- Ice pick



GAUGE

2 dc rnds = 1½ inches

PATTERN NOTES

Hold 2 strands of yarn together throughout unless otherwise stated.

Join with slip stitch as indicated unless otherwise stated.

Chain-3 at beginning of row or round counts as first double crochet unless otherwise stated.

Chain-2 at beginning of row or round counts as first half double crochet unless otherwise stated.



INSTRUCTIONS

COVER

BOTTOM

Rnd 1: With ecru, ch 4, 11 dc in 4th ch from hook (*first 3 chs count as first dc*), **join** (*see Pattern Notes*) in 3rd ch of beg ch-4. (12 dc)

Rnd 2: **Ch 3** (*see Pattern Notes*), dc in same st, 2 dc in each st around, join in 3rd ch of beg ch-3 (24 dc)

Rnd 3: Ch 3, 2 dc in next st, [dc in next st, 2 dc in next st] around, join in 3rd ch of beg ch-3. (36 dc)

Rnd 4: Ch 3, dc in next st, 2 dc in next st, [dc in each of next 2 sts, 2 dc in next st] around, join in 3rd ch of beg ch-3. (48 dc)

Rnd 5: Ch 3, dc in each of next 2 sts, 2 dc in next st, [dc in each of next 3 sts, 2 dc in next st] around, join in 3rd ch of beg ch-3. (60 dc)

Rnd 6: Working in **back lps** (see *Stitch Guide*) and from left to right, ch 1, **reverse sc** (see *Stitch Guide*) in each st around, join in beg reverse sc. Fasten off.

SIDES

Rnd 7: Working in **front lps** (see *Stitch Guide*) of sts on rnd 5, join earth tone in first st, ch 3, dc in each of next 2 sts, ch 1, [dc in each of next 3 sts, ch 1] around join in 3rd ch of beg ch-3. (20 ch-1 sps, 60 dc)

Rnd 8: **Fp sl st** (see *Stitch Guide*) around first st, ch 3, **fpdc** (see *Stitch Guide*) around each of next 2 sts, ch 1, [fpdc around each of next 3 sts, ch 1] around, join in 3rd ch of beg ch-3.

Rnds 9–12: **Fp sl st** around first st, ch 3, fpdc around each of next 2 sts, ch 1, [fpdc around each of next 3 sts, ch 1] around, join in 3rd ch of beg ch-3. At end of last rnd, fasten off.

Rnd 13: Join ecru in any st, working from left to right, sk all ch-1 sps, ch 1, reverse sc in each st around, join in beg reverse sc. Fasten off.

FIRST FLAP

Row 1: Working from the inside of Cover, join earth tone around post of any st on rnd 12, ch 3, fpdc around each of next 2 fpdc, ch 6, fpdc around each of next 3 fpdc, leaving rem sts unworked, turn. (1 ch-6 sp, 6 fpdc)

Row 2: Ch 3, dc in each of next 2 fpdc, sc in next ch-6 sp, dc in each of next 3 fpdc, turn. (1 sc, 6 dc)

Row 3: Ch 3, dc in each of next 2 dc, dc in next sc, dc in each of next 3 dc, turn. (7 dc)

Rows 4 & 5: Ch 3, dc in each st across, turn.

Row 6: Ch 3, dc in next dc, ch 3, sk next 3 dc, dc in each of last 2 dc. Fasten off. (1 ch-6 sp, 6 fpdc)

2ND FLAP

Row 1: Sk next 24 fpdc on rnd 12 of Cover from First Flap joining, join earth tone around next fpdc, ch 3, fpdc around each of next 2 fpdc, ch 6, fpdc around each of next 3 fpdc, leaving rem sts unworked, turn. (1 ch-6 sp, 6 fpdc)

Rows 2–6: Rep rows 2–6 of First Flap.

HANDLE

Row 1: Ch 25, sl end of ch through ch-1 sp to outside of 1 Flap and through opposite ch-1 sp on other side of same Flap, join in first ch to form ring.

Rnd 2: Working in chs, sl st in first ch and in each ch around, join in beg sl st. Fasten off.

Rep on other Flap.

DRYING APPLE SLICES

Wash and dry either green or red apple and cut into thin slices. Dip slices in lemon juice to keep from discoloring.

Use only the 4 center slices of apple where seeds remain.

Lay apple slices on several thicknesses of paper towel and microwave at 30 percent power for a few minutes to speed drying process.

Remove from microwave and lay on clean, dry paper towel to continue drying for couple of days. Apple slices can be sprinkled with cinnamon before drying if desired.

FINISHING

Insert cinnamon sticks through every ch-1 sp column around Sides, except ch sps where Flaps are worked, as shown in photo.

Using ice pick, punch hole near top of each apple slice to thread yarn through.

Using double length of ecru, tie 2 apple slices to Cover next to each Handle as shown in photo. ■

Rippling Fun

SKILL LEVEL



EASY

FINISHED SIZE

Fits 1½-quart round baking dish

MATERIALS

- Pisgah Yarn & Dyeing Co. Peaches & Creme medium (worsted) weight yarn (solids: 2½ oz/122 yds/71g; ombres: 2 oz/98 yds/57g per ball):
2 balls each #1 white, #26 light blue and #201 sea mist
- Size K/10½/6.5mm crochet hook or size needed to obtain gauge



GAUGE

1 dc rnd = 1 inch

PATTERN NOTES

Hold 2 strands of yarn together unless otherwise stated.

Join with slip stitch as indicated unless otherwise stated.

Chain-3 at beginning of row or round counts as first double crochet unless otherwise stated.

INSTRUCTIONS

COVER

BOTTOM

Rnd 1: With 2 strands held tog (see Pattern Notes) of white, ch 4, 14 dc in 4th ch from hook (first 3 chs count as first dc), join (see Pattern Notes) in 3rd ch of beg ch-3. (15 dc)

Rnd 2: Ch 3 (see Pattern Notes), dc in same st, 2 dc in each st around, join in 3rd ch of beg ch-3. (30 dc)



Rnd 3: Ch 3, 2 dc in next st, [dc in next st, 2 dc in next st] around, join in 3rd ch of beg ch-3. (45 dc)

Rnd 4: Ch 3, dc in next st, 2 dc in next st, [dc in each of next 2 sts, 2 dc in next st] around, join in beg ch-3. (60 dc)

SIDE

Rnd 5: Working in **back lps** (*see Stitch Guide*) unless otherwise stated, ch 3, 2 dc in same st, dc in each of next 3 sts, **dc dec** (*see Stitch Guide*) in next 3 sts, dc in each of next 3 sts, [3 dc in next st, dc in each of next 3 sts, dc dec in next 3 sts, dc in each of next 3 sts] around, join in 3rd ch of beg ch-3. Fasten off.

Rnd 6: Join light blue to center dc of any 3-dc group, ch 3, 2 dc in same st, dc in each of next 3 sts, dc dec in next 3 sts, dc in each of next 3 sts, [3 dc in next st, dc in each of next 3 sts, dc dec in next 3 sts, dc in each of next 3 sts] around, join in 3rd ch of beg ch-3. Fasten off.

Rnds 7-12: Rep rnd 6 in following color sequence: sea mist, light blue, white, light blue, sea mist and light blue.

Rnd 13: Join white in center dc of any 3-dc group, ch 3, (dc, ch 2, 2 dc) in same st, dc in each of next 3 sts, sk next 3 sts, dc in each of next 3 sts, [(2 dc, ch 2, 2 dc) in next dc, dc in each of next 3 sts, sk next 3 sts, dc in each of next 3 sts] around, join in 3rd ch of beg ch-3.

Rnd 14: Ch 1, sc in each st around, with 3 sc in each ch-2 sp, join in beg sc. (78 sc)

HANDLE

With 2 strands light blue and 1 strand sea mist held together, ch 75, weave end through ch-2 sps on rnd 13, sl st in first ch to form ring. Fasten off.

FINISHING

Place casserole dish inside Cover, pull Handle up on opposite sides, drawing up the top of the Cover over the casserole. ■

STITCH GUIDE

FOR MORE COMPLETE INFORMATION, VISIT FREEPATTERNS.COM

STITCH ABBREVIATIONS

- beg** begin/begins/beginning
- bpdc** back post double crochet
- bpsc** back post single crochet
- bptr** back post treble crochet
- CC** contrasting color
- ch(s)** chain(s)
- ch-** refers to chain or space previously made (i.e., ch-1 space)
- ch sp(s)** chain space(s)
- cl(s)** cluster(s)
- cm** centimeter(s)
- dc** double crochet (singular/plural)
- dc dec** double crochet 2 or more stitches together, as indicated
- dec** decrease/decreases/decreasing
- dtr** double treble crochet
- ext** extended
- fpdc** front post double crochet
- fpdc** front post double crochet
- fpdc** front post double crochet
- fpdc** front post double crochet
- fpdc** front post double crochet
- g** gram(s)
- hdc** half double crochet
- hdc dec** half double crochet 2 or more stitches together, as indicated
- inc** increase/increases/increasing
- lp(s)** loop(s)
- MC** main color
- mm** millimeter(s)
- oz** ounce(s)
- pc** popcorn(s)
- rem** remain/remains/remaining
- rep(s)** repeat(s)
- rnd(s)** round(s)
- RS** right side
- sc** single crochet (singular/plural)
- sc dec** single crochet 2 or more stitches together, as indicated
- sk** skip/skipped/skipping
- sl st(s)** slip stitch(es)
- sp(s)** space(s)/spaced
- st(s)** stitch(es)
- tog** together
- tr** treble crochet
- trtr** triple treble
- WS** wrong side
- yd(s)** yard(s)
- yo** yarn over

YARN CONVERSION

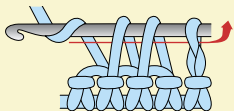
OUNCES TO GRAMS	GRAMS TO OUNCES
1 28.4	25 7/8
2 56.7	40 1 1/2
3 85.0	50 1 3/4
4 113.4	100 3 1/2

UNITED STATES

UNITED KINGDOM

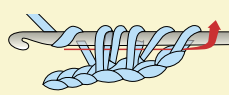
sl st (slip stitch)	=	sc (single crochet)
sc (single crochet)	=	dc (double crochet)
hdc (half double crochet)	=	htr (half treble crochet)
dc (double crochet)	=	tr (treble crochet)
tr (treble crochet)	=	dtr (double treble crochet)
dtr (double treble crochet)	=	ttr (triple treble crochet)
skip	=	miss

Single crochet decrease (sc dec):
(Insert hook, yo, draw lp through) in each of the sts indicated, yo, draw through all lps on hook.



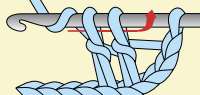
Example of 2-sc dec

Half double crochet decrease (hdc dec):
(Yo, insert hook, yo, draw lp through) in each of the sts indicated, yo, draw through all lps on hook.



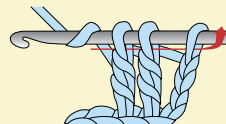
Example of 2-hdc dec

Double crochet decrease (dc dec): Yo, insert hook, yo, draw loop through, draw through 2 lps on hook in each of the sts indicated, yo, draw through all lps on hook.



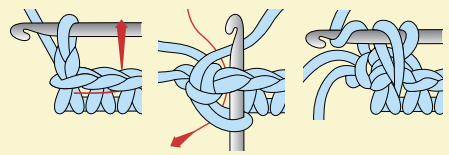
Example of 2-dc dec

Treble crochet decrease (tr dec): Hold back last lp of each st, tr in each of the sts indicated, yo, pull through all lps on hook.

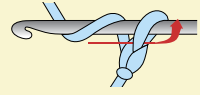


Example of 2-tr dec

Reverse Single Crochet (reverse sc): Ch 1. Skip first st. [Working from left to right, insert hook in next st from front to back, draw up lp on hook, yo, and draw through both lps on hook.]

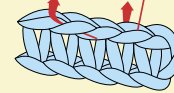


Chain (ch): Yo, pull through lp on hook.

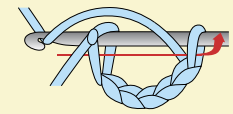


Front loop (front lp) Back loop (back lp)

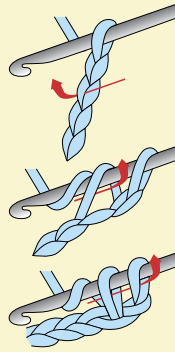
Front Loop Back Loop



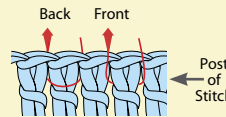
Slip stitch (sl st): Insert hook in st, pull through both lps on hook.



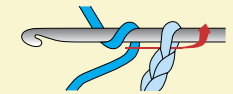
Single crochet (sc): Insert hook in st, yo, pull through st, yo, pull through both lps on hook.



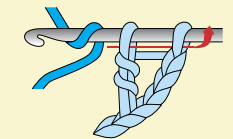
Front post stitch (fp): Back post stitch (bp): When working post st, insert hook from right to left around post st on previous row.



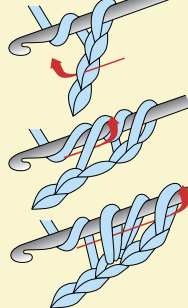
Chain Color Change (ch color change)
Yo with new color, draw through last lp on hook.



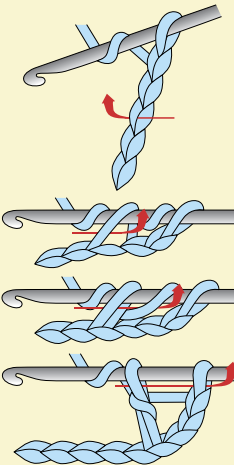
Double Crochet Color Change (dc color change)
Drop first color, yo with new color, draw through last 2 lps of st.



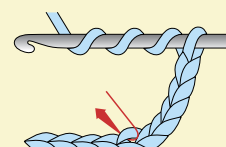
Half double crochet (hdc): Yo, insert hook in st, yo, pull through st, yo, pull through all 3 lps on hook.



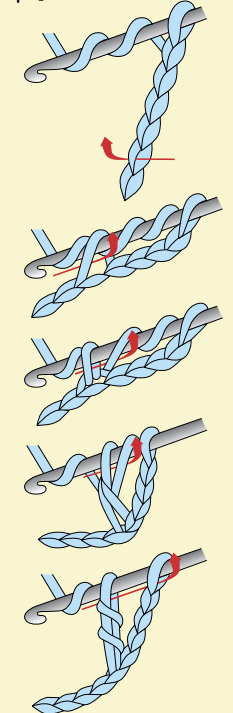
Double crochet (dc): Yo, insert hook in st, yo, pull through st, [yo, pull through 2 lps] twice.



Double treble crochet (dtr): Yo 3 times, insert hook in st, yo, pull through st, [yo, pull through 2 lps] 4 times.



Treble crochet (tr): Yo twice, insert hook in st, yo, pull through st, [yo, pull through 2 lps] 3 times.



Metric Conversion Charts

METRIC CONVERSIONS			
yards	x	.9144	= metres (m)
yards	x	91.44	= centimetres (cm)
inches	x	2.54	= centimetres (cm)
inches	x	25.40	= millimetres (mm)
inches	x	.0254	= metres (m)

centimetres	x	.3937	= inches
metres	x	1.0936	= yards

INCHES INTO MILLIMETRES & CENTIMETRES (Rounded off slightly)								
inches	mm	cm	inches	cm	inches	cm	inches	cm
1/8	3	0.3	5	12.5	21	53.5	38	96.5
1/4	6	0.6	5 1/2	14	22	56	39	99
3/8	10	1	6	15	23	58.5	40	101.5
1/2	13	1.3	7	18	24	61	41	104
5/8	15	1.5	8	20.5	25	63.5	42	106.5
3/4	20	2	9	23	26	66	43	109
7/8	22	2.2	10	25.5	27	68.5	44	112
1	25	2.5	11	28	28	71	45	114.5
1 1/4	32	3.2	12	30.5	29	73.5	46	117
1 1/2	38	3.8	13	33	30	76	47	119.5
1 3/4	45	4.5	14	35.5	31	79	48	122
2	50	5	15	38	32	81.5	49	124.5
2 1/2	65	6.5	16	40.5	33	84	50	127
3	75	7.5	17	43	34	86.5		
3 1/2	90	9	18	46	35	89		
4	100	10	19	48.5	36	91.5		
4 1/2	115	11.5	20	51	37	94		

KNITTING NEEDLES CONVERSION CHART

Canada/U.S.	0	1	2	3	4	5	6	7	8	9	10	10 1/2	11	13	15
Metric (mm)	2	2 1/4	2 3/4	3 1/4	3 1/2	3 3/4	4	4 1/2	5	5 1/2	6	6 1/2	8	9	10

CROCHET HOOKS CONVERSION CHART

Canada/U.S.	1/B	2/C	3/D	4/E	5/F	6/G	8/H	9/I	10/J	10 1/2/K	N
Metric (mm)	2.25	2.75	3.25	3.5	3.75	4.25	5	5.5	6	6.5	9.0



Casserole Covers is published by DRG, 306 East Parr Road, Berne, IN 46711. Printed in USA. Copyright © 2010 DRG. All rights reserved. This publication may not be reproduced in part or in whole without written permission from the publisher.

RETAIL STORES: If you would like to carry this pattern book or any other DRG publications, visit DRGwholesale.com

Every effort has been made to ensure that the instructions in this publication are complete and accurate. We cannot, however, take responsibility for human error, typographical mistakes or variations in individual work. Please visit AnniesCustomerCare.com to check for pattern updates.

