



# C2C WAFFLE STITCH PATTERN

By Jade Taylor of Black Holes and Unicorns Crochet

This pattern allows you to make an article of any size as it consists of a simple 2-row repeat for both the increase and decrease. In this pattern I will give the general pattern, and then the specific rows used to create the blanket shown. There is also a chart given at the end.

I would love to see what you make with this pattern, so if you make something please tag me on Instagram @blackholesandunicornscrochet, and use #c2cwafflestitch and #blackholesandunicornscrochet or share with my Facebook page 'Black Holes and Unicorns Handmade and Crochet'. I can't wait to see what you create!



## Hook and yarn:

- This pattern can be worked to any size and using any yarn. My blanket and test piece shown are done using 10 ply yarn and a 6.5 mm hook, which is bigger than the suggested hook size for this yarn. I suggest starting with a hook a size or two bigger than recommended.
- It is important that you get a right-angled triangle when you are increasing so the pattern turns out square. I suggest checking your work against the corner of a table as you go to make sure it is getting the correct angle.
- You may need to adjust your hook size to get the tension right for this. It may not look square initially as the increases in each row get pulled into shape when the next row is made. Please give it around 8 rows of increasing to see if you get the correct shape before you try a different hook size.

© Jade Taylor of Black Holes and Unicorns Crochet

You may make and sell items created from this pattern, but please credit me as the designer.

This pattern is not to be distributed without proper credit to the designer.

### Things to know:

- This pattern is written in US terms.
- I've tried to make this pattern beginner friendly. All the stitches used are fairly basic. I have described them briefly here, and tutorials for all of them can be found online. If you have never made something with standard waffle stitch (made in rows) before you might want to do a swatch of that first to get used to the stitch. There are plenty of tutorials for this online.
- I am using a chainless double crochet to start each row, but you can use whatever start you are comfortable with. Other common starts are 3 chains, or a single crochet and chain. The chainless double crochet that I use was created by Tamara Kelly from Moogly Blog, and tutorials can be found here (<https://www.mooglyblog.com/improved-csdc/>).
- This pattern has three sets of rows: increase (Inc#), decrease (Dec#), and border (Border#). The border is optional, you can make the pattern with no border or any other border you like.
- When increasing the stitch count increases by 3 each row, when decreasing it decreases by 3 each row.
- The right side of the work is the side with 1 fpdc and 2 dc.
- This work must be turned at the end of each row for the c2c pattern. For the border, instructions are given in the row when turning is needed.
- This pattern is written to be square, but by continuing to increase on one side of the work and decreasing on the other side a rectangle can be made.

### Abbreviations:

- **dc**: double crochet – yarn over, insert hook through stitch, yarn over, draw through loop (3 loops on hook), yarn over, pull through 2 loops, yarn over, pull through remaining 2 loops.
- **sc**: single crochet – insert yarn through stitch, yarn over, draw through loop (2 loops on hook), yarn over, pull through both loops.
- **stdc**: starting double crochet: whichever starting double crochet method you prefer.
- **fpdc**: front-post double crochet – yarn over, insert hook around the post of the next stitch from the front, yarn over, draw through loop (3 loops on hook), yarn over, pull through 2 loops, yarn over, pull through remaining 2 loops.
- **ch**: yarn over, pull through loop currently on hook.
- **sl st**: yarn over, insert hook into chain or stitch, pull through stitch and loop on hook.
- **st**: stitch
- **tog**: together – this is how I will indicate a decrease. For example, (2dc)tog in next 2 stitches means yarn over, insert hook through stitch, yarn over, draw through loop (3 loops on hook), yarn over, pull through 2 loops, yarn over, insert hook in next stitch, yarn over, draw through loop (4 loops on hook), yarn over, pull through 2 loops, yarn over, pull through remaining 3 loops. This has crocheted 2 stitches together and decreased the stitch count by 1.
- **()**: stitches made in the same stitch.
- **{ }**: repeat stitches in the brackets for the indicated number of repeats.
- **[ ]**: number of stitches in that row.
- **\*\***: repeat stitches between \* for the indicated number of repeats.

Increase rows:

Inc1: Ch 3, sl st into first ch to form ring. Stdc in ring, 4 dc in ring [5 st].

Inc2: (Stdc, 2dc) in first st, dc in next st, fpdc around next st, dc in next st, 2dc in last st [8 st].



Inc3: (Stdc, 2dc) in first st, {fpdc around next 2 st, dc in next st} until there is 1 st left, 2dc in last st [11 st].

Inc4: (Stdc, 2dc) in first st, dc in next st, {fpdc around next st, dc in next 2 st} until there is 3 st left, fpdc around next st, dc in next st, (2dc) in last st [14 st].



Repeat rows Inc3 and Inc4 until you reach the desired width of your project, then repeat row 3 one more time, and move on to the decrease rows. The picture below shows 9 increase rows.



© Jade Taylor of Black Holes and Unicorns Crochet  
You may make and sell items created from this pattern, but please credit me as the designer.  
This pattern is not to be distributed without proper credit to the designer.

Decrease rows:

Dec1: (stdc, dc, fpdc)tog in first 3 st, {dc in next 2 st, fpdc around next st} until there are 2 st left, (2dc)tog in last 2 st [-3 st].



Dec2: (stdc, dc, fpdc)tog in first 3 st, fpdc around next st, {dc in next st, fpdc around next 2 st} until there are 3 st left, fpdc around next st, (fpdc, dc)tog in last 2 st [-3 st].



Repeat rows Dec1 and Dec2 until you have 8 st remaining.

Dec3: (stdc, dc, fpdc)tog in first 3 st, fpdc around next st, dc in next st, fpdc around next st, (fpdc, dc)tog in last 2 st [5 st].



Dec4: (stdc, dc, fpdc, dc, dc)tog in next 5 st [1 st]. Fasten off. Picture below shows after 9 decrease rows (18 rows total).



#### Border rows:

If you want to make the normal waffle stitch border as shown in the blanket I made then follow these steps. To make the waffle stitch pattern work for the border you need a stitch count in Border1 with a multiple of 3 + 1 on each side.

Border1: With right side of work facing you, attach yarn at any corner with a sl st. Ch1, sc in the same space, ch 2, sc in same space. {Sc along the side evenly, (sc, ch 2, sc) in corner} four times, omitting last corner. Sl st into first sc to finish round. [Multiple of 3 + 1 sc on each side, ch2 in each corner].

Border2: Sl st into ch2 space from previous round, stdc in ch2 space, ch2, 2dc in same ch2 space, {dc in each sc across, (2dc, ch2, 2dc) in ch2 space}, omitting last corner, dc in ch2 space before first dc of the round, sl st to first dc to finish round [+4 dc in each side, ch2 in each corner].

Border3: Sl st into ch2 space in corner. Turn. Stdc in ch2 space, ch2, dc in same ch2 space, \*{fpdc around next 2 st, dc in next st} until there are 2 st left in the side, fpdc around last 2 st, (dc, ch2, dc) in ch2 space\* repeat three times, {fpdc around next 2 st, dc in next st} until there are 2 st left in the side, fpdc around last 2 st, sl st to first dc to finish round [+2 st in each side, ch2 in each corner].

Border4: Sl st into ch2 space in corner. Turn. Stdc in ch2 space, ch2, 2dc in same ch2 space, \*{fpdc around next st, dc in next 2 st} until there is 1 st left in the side, fpdc around next st, (2dc, ch2, 2dc) in ch2 space\* repeat three times, {fpdc around next st, dc in next 2 st} until there is 1 st left in the side, fpdc around last st, dc in ch2 space before first dc of round, sl st to 1<sup>st</sup> dc to finish round [+4 st in each side, ch2 in each corner].

Repeat Border3 and Border4 until desired size is reached.

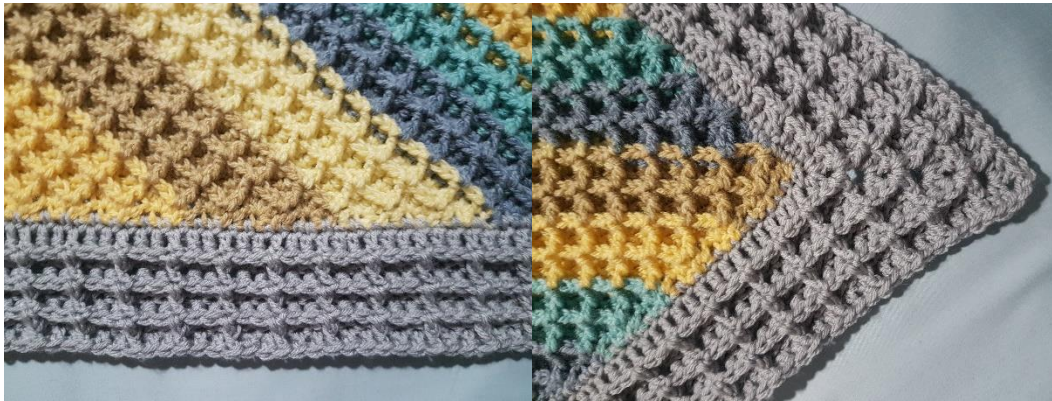
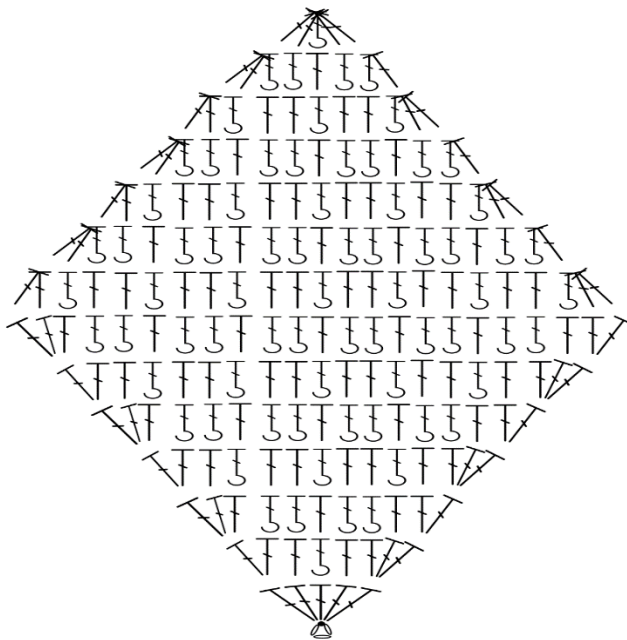


Chart:



### Blanket Pattern:

The blanket shown here was made using 2 Caron cakes for the c2c section, and another 10 ply yarn for the border. For this blanket I increased for 47 rows, giving 143 st, then decreased, making a total of 94 rows. I had 76 sc across each edge for Border1 (25x3+1 st). I had a total of 8 rows of the border. The blanket measured ~68 cm square after the c2c part, and ~80 cm square with the border.



© Jade Taylor of Black Holes and Unicorns Crochet

You may make and sell items created from this pattern, but please credit me as the designer.

This pattern is not to be distributed without proper credit to the designer.