

Maltese Dog Crochet PATTERN

By Tatjana Ozolina (www.ambercraftstore.etsy.com)

PATTERN SUPPORT: I offer pattern-assistance, contact me for any issue:

www.ambercraftstore.etsy.com

PERMISSION TO SELL: You are welcome to sell the finished product made from this pattern!

POLICY: The pattern and photographs contained in this document are property of the Tatjana Ozolina (Ambercraftstore). This pattern is available for personal use only. No unauthorized reproduction, in whole or in part or distribution of this pattern or content is allowed. Please, do not copy or share this Pdf-file, or any of the content in this pattern. Thank you!



Materials:

Eyelashes (fur) yarn – Red Heart Fur yarn (polar color) – 3 skeins

Sport (weight #2) yarn - Premier yarn Cotton Fair (white or cream color) – 1 skein

Light (weight #3) yarn – cream color

Medium weight yarn – black color for mouth

Eyes - Plastic Safety eyes, 18mm

Nose - Plastic Safety nose (about 1" big) or some **bake polymer clay black color** to make nose.

Doll joints: 2 joints 30mm big for front legs and 2 joint 45mm big for back legs.

Wire for tail and front legs

Some weight to put inside of dog (I use regular rocks)

Optional: dry pastel to paint face – black color
Super glue, if you are going to glue baked nose
Hooks: 2,2mm, 2,75mm

Abbreviations:

sc –single crochet

hdc – half double crochet

dc – double crochet

dec -2sc together –single crochet decrease

inchdc – crochet 2hdc in 1 stitch – half double crochet increase

dechdc -2hdc together – half double crochet decrease

inc – crochet 2sc in 1 stitch -single crochet increase

()*# – repeat instructions in brackets # times

(#) – the number of stitches you should have in the round

TOY SHOULD BE CROCHET INSIDE OUT.

Video how to crochet with fur yarn you can find here:

https://www.youtube.com/watch?v=TrCEfN_N1c&t=12s

<https://www.youtube.com/watch?v=xadnr7ILVSg>

Head

Sport yarn, white or cream color, hook 2.75mm

Work in rounds with join

- Crochet odd rounds with **NO** fur yarn (only sport yarn), even rounds **WITH** fur yarn

Round 1: 8chain, start in the second from hook: 6sc, 3sc in 1 stitch, 5sc, inc (16)

With fur yarn

Round 2: inc, 5sc, inc*3, 5sc, inc*2 (22)

No fur yarn

Round 3: inc, 6sc, (sc, inc)*3, 5sc, (sc, inc)*2(28)

With fur yarn

Round 4: inc, 6sc, (2sc, inc)*3, 6sc, (2sc, inc)*2 (34)

No fur yarn

Round 5: 34sc

With fur yarn

Round 6: inc, 7sc, (3sc, inc)*3, 6sc, (3sc, inc)*2 (40)

No fur yarn

Round 7: 40sc

With fur yarn

Round 8: inc, 7sc, (4sc, inc)*3, 7sc, (4sc, inc)*2 (46)

No fur yarn

Round 9: 46sc

With fur yarn

Round 10: 7sc, inc*3, 10sc, inc*3, 20sc, inc*3 (55)

Round 11- No fur yarn, round 12- with fur yarn

Round 11-17: 55sc

With fur yarn

Round 18: (sc, inc)*11, 33sc (66)

No fur yarn

Round 19: on back loop: (2hdc, inchdc)*11, on both loops: 31sc, inchdc (77)

With fur yarn every second round (round 20 with fur yarn, round 21 - no fur yarn...)

Round 20-22: 44hdc, 31sc, 2hdc (77)

Round 23-25: 77sc

Round 26: (9sc, dec)*7 (70)

No fur yarn

Round 27: 70sc

With fur yarn Round 28: (8sc, dec)*7 (63)

No fur yarn

Round 29: 63sc

With fur yarn Round 30: (7sc, dec)*7 (56)

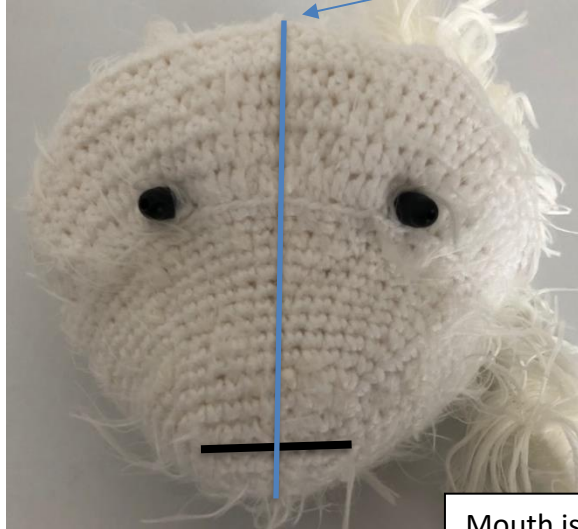
No fur yarn

Round 31: 56sc

Putting safety eyes on round 19.

Before to attach eyes cut off eyelashes (very carefully), where eyes will go. Leave about 17-18 stitches between eyes. Make sure eyes are located symmetrically toward the mouth

View from inside of the head



View from outside of the head



Mouth is going to be here. Mark it with yarn to be able to find latter

With fur yarn

Round 32: (6sc, dec)*7 (49)

No fur yarn

Round 33: (5sc, dec)*7 (42)

With fur yarn Round 34: (4sc, dec)*7 (35)

No fur yarn

Round 35: (3sc, dec)*7 (28) Stuff the head very firmly, make sure head looks symmetrically.

With fur yarn Round 36: (2sc, dec)*7 (21)

No fur yarn

Round 37: (sc, dec)*7 (14) Stuff more fiberfill

With fur yarn Round 38: dec *7 Fasten off. Sew the hole.

Ears (make 2)

Sport yarn, white color, hook 2.75mm.

Crochet in rows (forward and back)

Row 1: ch16, start to crochet in 2d chain from the hook: 15sc

With fur yarn

Row 2-15: 15sc

Row 16: dec, 11sc, dec (13)

Row 17: 13sc

Row 18: dec, 9sc, dec (11)

Row 19: 11sc

Row 20: dec, 7sc, dec (9)

Row 21: 9sc

Row 22: 3sc, dec, 4sc (8)

No fur yarn

Row 23: 8sc

Row 24: 8dc

Fasten off, leave tail to sew. Sew on the head



Glue on nose.

First cut off eyelashes (**very carefully**) where nose is going to be glued on.

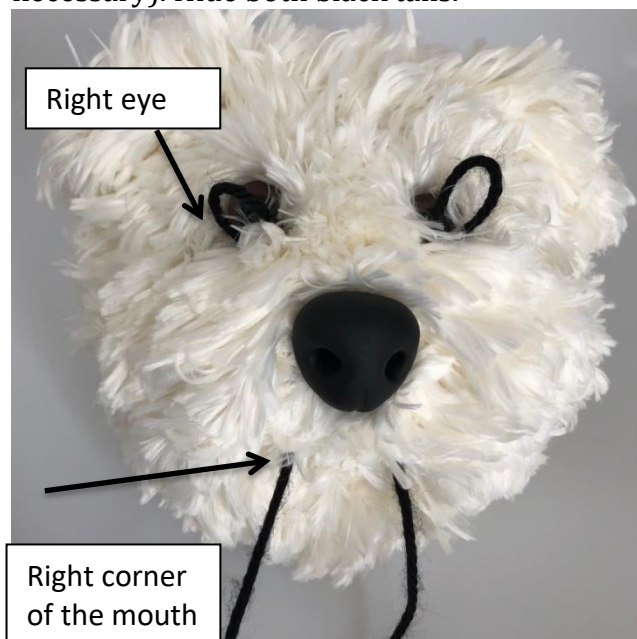
I made nose from oven bake polymer clay. Video how to make nose by yourself:

<https://youtu.be/00ipIIOW5WI>.



Make mouth.

Cut fur shorter around the mouth area. Insert needle with black yarn in the right corner of mouth take it out under right eye, skip 2 stitches to left, insert needle into the head and take it out under left eye's inside corner, skip 2 stitches to left, insert needle and take it out in the left corner of mouth. Pull both strings hard, make knot, in the right corner of mouth. After that with put one of the black yarn into needle and embroider 1-2 times mouth (if necessary). Hide both black tails.



Eyelids (make2)

Sport yarn, white or cream color, hook 2.2mm

Row 1: make ch10, start to crochet in 2nd chain from the hook: 2sl st, 5sc, 2sl st



Glue on top of the each eye. Sew ends of eyelids, hide tails into head.

Paint around the mouth, a little bit under nose and around eyes with black color. I use black dry pastel and brush to paint my dogs.

Front legs (make2)

Light weight (#3) yarn, cream color, hook 2.75mm

Paw part

Round 1: in amigurumi ring 6 (6)

Round 2: inc*6 (12)

With fur yarn

Round 3: (3sc, inc)*3 (15)

Round 4-6: 15hdc

No fur yarn. Do not stuff.

Round 7: Both sides together: 7sc

Picture shows how to crochet both sides together (with no fur for better view)



Crochet both sides together

Round 8: to make round: on back loops 7sc, on front loops 6sc, inc (15)

Pictures shows legs with no fur for better view



Continue

Leg part

With fur yarn

Stuff lightly after every 3-4 rounds you made. Put inside wire to help dog to sit better. Secure both ends with scotch.

Round 9- 23: 15hdc

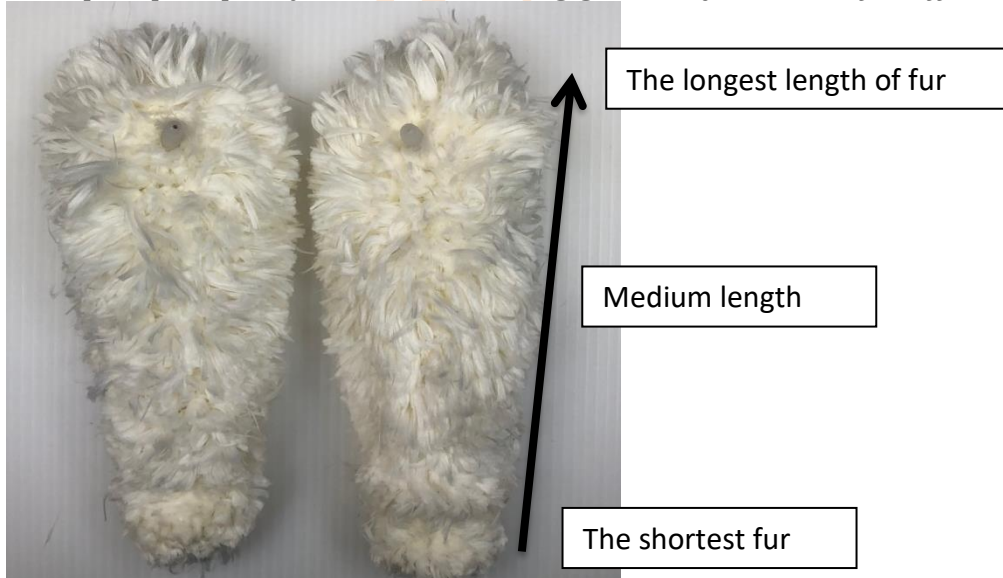
Put doll joining (size 30mm) on round 21.

Round 24: (hdc, dechdc)*5 (10)

Round 25: dec*5

Fasten off, sew the hole

Trim paw part pretty short. Trim all leg gradually. Also, cut fur off around doll joints.



Back legs (make2)

Light weight (#3) yarn, cream color, hook 2.75mm Work in rounds **with join.**

Round 1: in amigurumi ring make 6sc

Round 2: inc*6 (12)

With fur yarn

Round 3-8: 12hdc

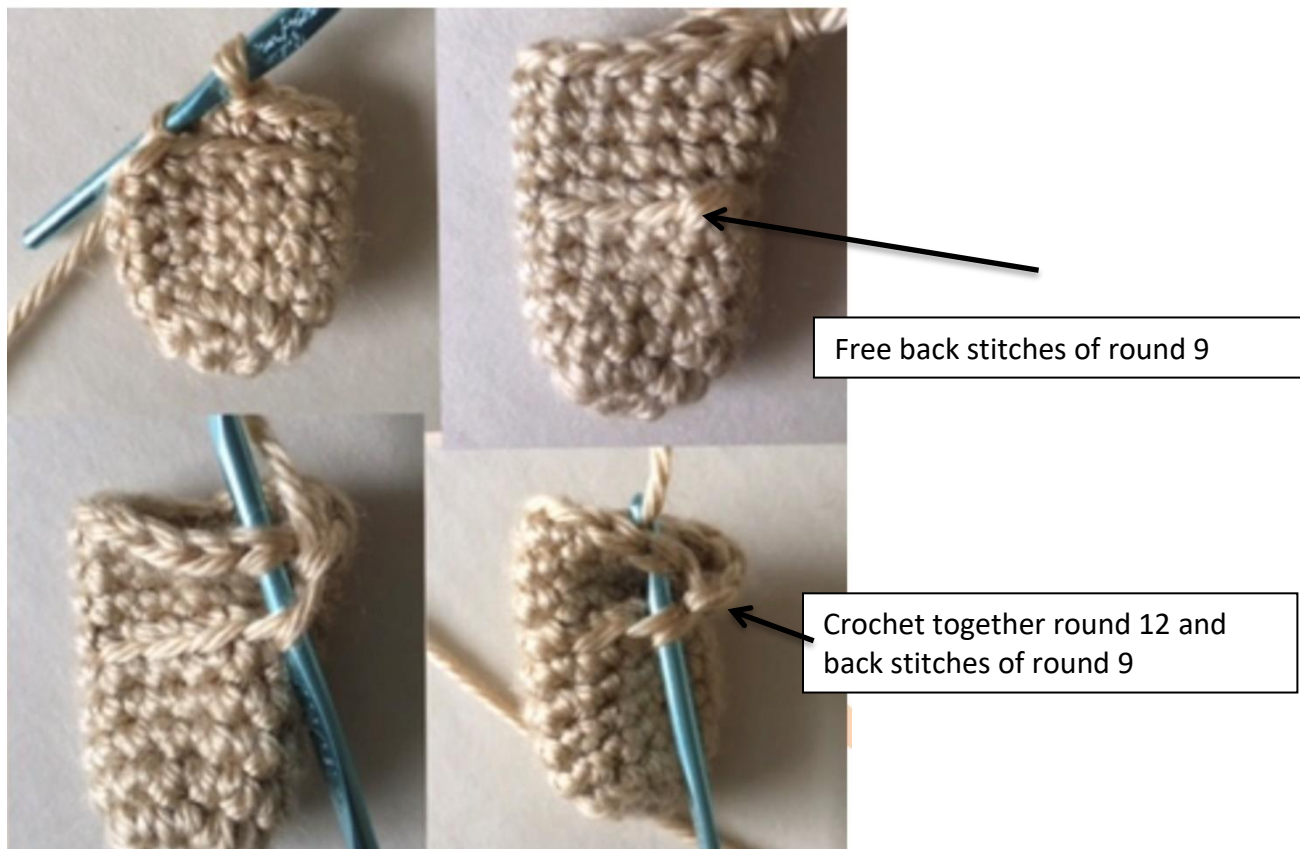
NO FUR Round 9: 4sc, work only on front loop- 4sc, 4sc (12) Stuff with fiber lightly

Work only even rounds with fur yarn: 1 round no fur yarn, 1 round with fur yarn

Round 10, 11: 12sc (12)

Round 12: 4sc, before to crochet 2 rounds together cut fur short (from round 10 to see stitches) on those 4 stitches only: crochet together round 9 and 12 - 4sc; 4sc (12)

Picture: How to crochet 2 rounds together



Round 13: 5sc, work only on front loop - inc*2; 5sc (14)

Round 14: 6sc, inc*2; 6sc (16)

MAKE SURE NO FUR Round 15: work only on front loop - 3sc; 4sc, inc*2, 4sc, work only on front loop- 3sc (18)

Round 16: 8sc, inc*2, 8sc (20)

Round 17, 18: 20sc (20) stuff with fiber lightly

MAKE SURE NO FUR Round 19: before to crochet 2 rounds together cut fur short on 3 first and 3 last stitches of **rounds 18 and 16** to find 6 free back stitches of round 15: crochet together round 15 and 19 - 3sc; 14sc, crochet together round 15 and 19- 3sc (20)

Picture: Before to crochet 2 rounds together cut fur short on 3 first and 3 last stitches of **rounds 18 and 16** to find 6 free back stitches of round 15



Round 20: 9sc, inc*2, 9sc (22)

Round 21: 10sc, inc*2, 10sc (24)

For left leg Round 22: 5sc, **hole for joint:** skip 2 stitches, make 2 chains, 17sc (24)

For right leg Round 22: 17sc, **hole for joint:** skip 2 stitches, make 2 chains, 5sc (24)

Round 23 -27: 24sc (24)

Attach doll joint(45mm). Stuff with fiber very lightly.

Round 28: (2sc, dec)*6 (18)

Round 29: (sc, dec)*6 (12)

Sew the hole

Cut fur off around joint.



Tail

Light yarn, cream color, hook 2.75mm

Round 1: in amigurumi ring 6 sc(6)

Round 2: inc*2 (12)

With fur yarn

Round 3: 12hdc

Make as many rounds as needed to get about 6" / 15cm long tail.

Cut wire about 8" long. Secure one end of wire with scotch. Secured end of wire put inside into the tail; the rest of wire will go into the body.

Do not stuff.

Last round: crochet both sides together 6sc (Part of wire should be out).

Fasten off.

Trim with scissors if needed.

Picture: The tail with "wire"



Body

Work in rounds **with join.**

CROCHET INSIDE OUT

Only sport yarn

Round 1: in amigurumi ring 6 (6)

Round 2: inc*6 (12)

Round 3: (sc, inc)* 6 (18)

Round 4: (2sc, inc)*6 (24)

Round 5: (3sc, inc)*6 (30)

Round 6: (4sc, inc)*5, 5sc (35)

With fur yarn

Round 7-8: 35hdc

Round 9: (4hdc, inchdc)*6, 5sc (41)

Round 10: 41hdc

Round 11: (5hdc, inchdc)*6, 5sc (47)

Round 12: 47hdc

Round 13: (6hdc, inchdc)*6, 5sc (53)

Round 14, 15: 53hdc

Round 16: (7hdc, inchdc)*6, 5sc (59)

Round 17, 18: 59hdc

Round 19: (8hdc, inchdc)*6, 5sc (65)

Round 20: 65hdc

Round 21: (9hdc, inchdc)*6, 5sc (71)

Round 22: 71hdc

Round 23: (10hdc, inchdc)*6, 5sc (77)

Round 24: 77hdc

Round 25: (11hdc, inchdc)*6, 5sc (83)

Round 26: 31hdc, **hole for joint:** skip 1 stitch and make 1 chain, 19hdc, **hole for joint:** skip 1 stitch and make 1 chain, 31dc (83)

Round 27: (12hdc, inchdc)*6, 5sc (89)

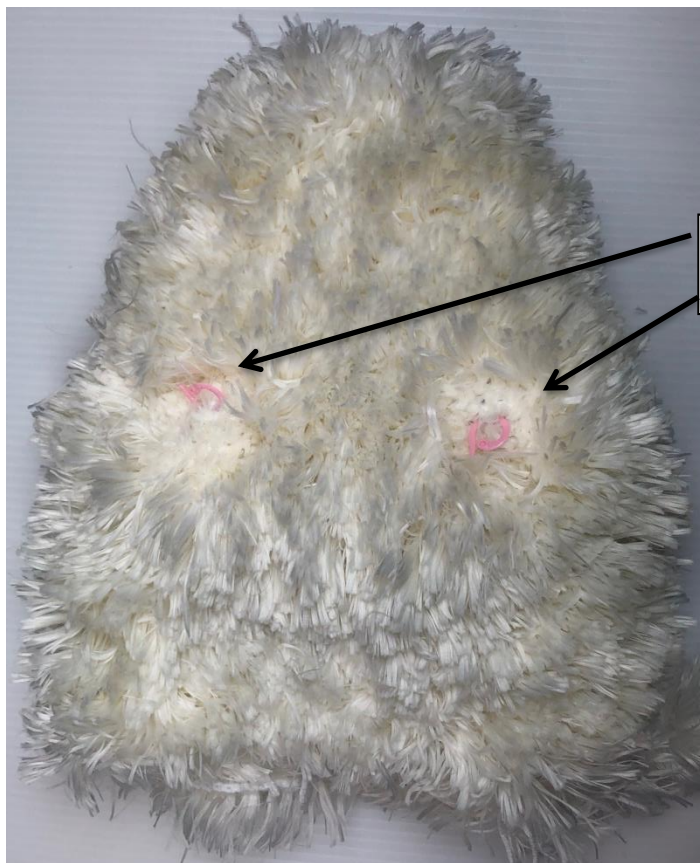
Round 28: 89hdc

Round 29: (27hdc, inchdc)*3, 5sc (92)

Round 30-34: 92hdc

Now we are going to attach front legs on round 26.

Cut the fur off around both holes for joints.



Cut the fur off around both holes for joints.

Round 35: 92hdc

Round 36: (2hdc, inchdc)*4, 18hdc, (2hdc, dechdc)*8, 18hdc, (2hdc, inchdc)*4 (92)

Round 37, 38: 92hdc

Round 39: 23hdc, **hole for joint:** skip 1 stitch and make 1 chain, 44hdc, **hole for joint:** skip 1 stitch and make 1 chain, 23hdc (92)

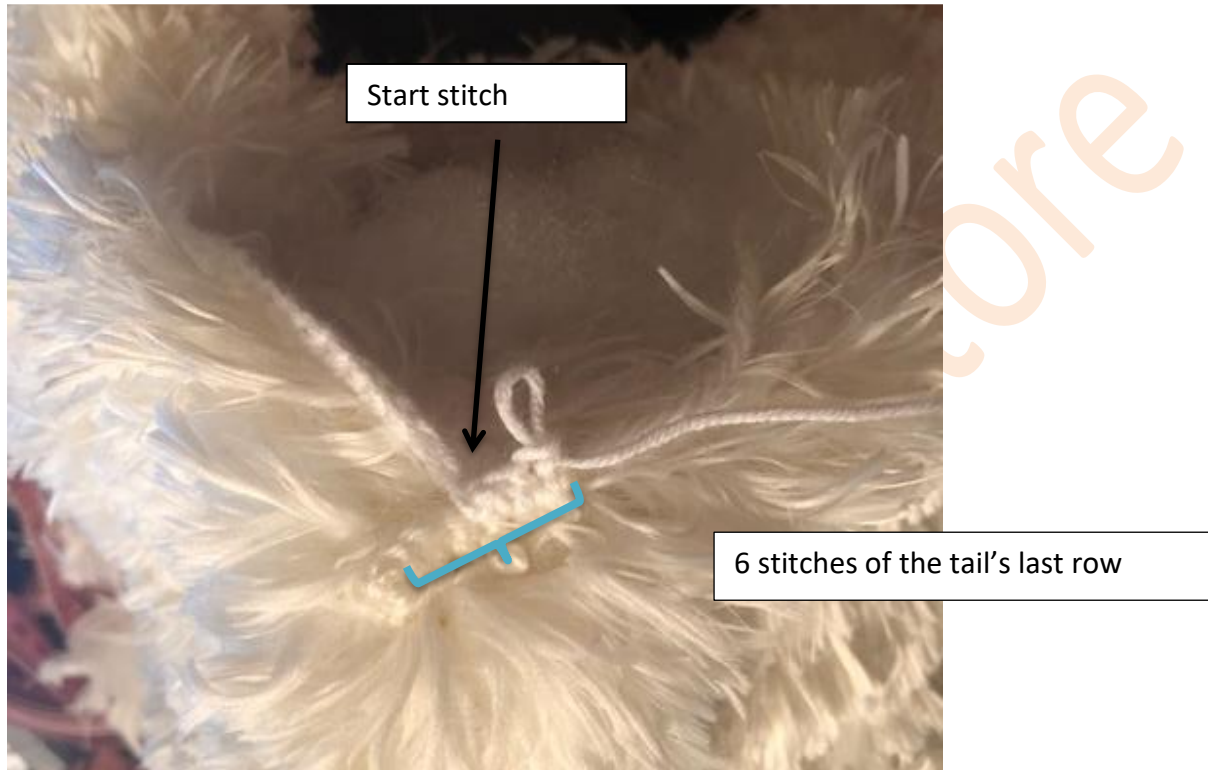
Round 40: (2hdc, inchdc)*4, 18hdc, (2hdc, dechdc)*8, 18hdc, (2hdc, inchdc)*4 (92)

Round 41 - 43: 92hdc

Round 44: (2hdc, inchdc)*4, 18hdc, (2hdc, dechdc)*8, 18hdc, (2hdc, inchdc)*4 (92)

Attaching a tail

Round 45: 3sc together with half of tail, 86hdc, 3sc together with the rest of tail (92)
The rest of wire (for tail) should be in the body Because of fur you won't notice it). Sorry, I do not have wire on the picture (decided that wire is needed later).
Picture: Start to attach the tail from the middle of last round (of tail)



Attach legs on round 39. Cut off fur around the holes before to attach legs. Make sure you attach legs right way. Tail is back of the body ☺

Round 46: dechdc, (13hdc, dechdc)*6 (85)

Round 47: (12hdc, dechdc)*6, hdc (79)

Round 48: dechdc, 10hdc, dechdc, (11hdc, dechdc)*5 (72)

Round 49: (10hdc, dechdc)*6 (66)

Round 50: (9hdc, dechdc)*6 (60)

Stuff 2/3 of body firmly. Make sure the neck part is stuffed very firmly to avoid head wobbling. To help dog to sit stable, put inside of the body some weight closer to the tail. Stuff the rest of the body wisely. The rest of body should be "flat" not round.

Picture: make butt “flat” to help him to sit.



This part (bottom) should be flat

Round 51: (8hdc, dechdc)*6 (54)

Round 52: (7hdc, dechdc)*6 (48)

Round 53: (6hdc, dechdc)*6 (42)

Round 54: (5hdc, dechdc)*6 (36)

Round 55: (4hdc, dechdc)*6 (30)

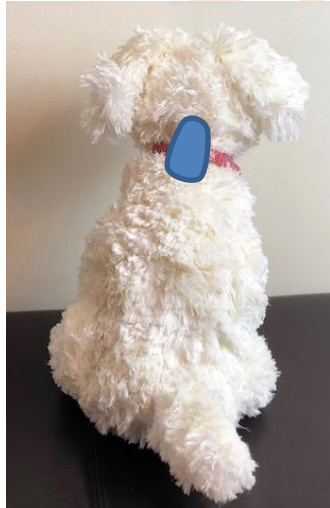
Stuff more stuffing. Body should be stuffed firmly.

Round 56: (3hdc, dechdc)*6 (24)

Round 57: (2hdc, dechdc)*6 (18)

Fasten off. Sew the hole.

Sew head on the body. I adjusted a little bit head, after I saw it on. I saw head with body on the back to lift head up a little bit. If you feel you need to lift head up do the same.



Some pictures were made:



If you feel her front legs slip away from body and she is falling down, you can sew her front legs with body



Looks like alive, doesn't she?

I hope you enjoy that pattern. If you found some typos, please, feel free to let me know.

Thank you for joining to me on this journey.

AmberCraftStore