



***Free Crochet Pattern***  
**Lion Brand® Wool-Ease® Thick & Quick®**  
**Daisy Chain Scarf**  
Pattern Number: L60177



## **SKILL LEVEL – Easy+**

### **SIZE**

About 10 x 67 in. (25.5 x 170 cm)

### **MATERIALS**

- Lion Brand® Wool-Ease® Thick & Quick® (Art. #640)
  - 154 Grey Marble 2 balls
  - or color of your choice
- Lion Brand® crochet hook size N-13 (9 mm)
- Lion Brand® large-eyed blunt needle



### **GAUGE**

1 pattern rep = about 3 1/4 in. (8.5 cm). **Note:** One pattern rep consists of sc, (ch 9, sl st) twice, sc and the following ch-4 sp.  
**BE SURE TO CHECK YOUR GAUGE.**

### **NOTES**

1. Scarf is worked in one piece.
2. For those who find a visual helpful, we've included a stitch diagram.

### **SCARF**

Ch 21.

**Row 1:** Sc in 2nd ch from hook, ch 9, sl st in last sc made, sc in next ch, \*ch 4, sk next 4 ch, sc in next ch, (ch 9, sl st in last sc made) twice, sc in next ch; rep from \* to last 6 ch, ch 4, sk next 4 ch, sc in next ch, ch 9, sl st in last sc made, sc in last ch – you will have 8 sc, 3 ch-4 sps, and 6 ch-9 sps in this row (for 3 pattern reps).

**Row 2:** Ch 6 (counts as tr, ch 2), turn, (sc in 5th ch of next ch-9 sp) twice, \*ch 4, (sc in 5th ch of next ch-9 sp) twice; rep from \* across, ch 2, tr in last sc – 2 tr, 6 sc, 2 ch-4 sps, and 2 ch-2 sps.

**Row 3:** Ch 1, turn, sc in first st, ch 2, sk first ch-2 sp, sc in next sc, (ch 9, sl st in last sc made) twice, sc in next sc, \*ch 4, sk next ch-4 sp, sc in next sc, (ch 9, sl st in last sc made) twice, sc in next sc; rep from \* to beg ch, ch 2, sc in 4th ch of beg ch-6 – 8 sc, 2 ch-2 sps, 2 ch-4 sps, and 6 ch-9 sps.

**Row 4:** Ch 4 (counts as tr), turn, sc in 5th ch of first ch-9 sp, \*ch 4, (sc in 5th ch of next ch-9 sp) twice; rep from \* to last ch-9 sp, ch 4, sc in 5th ch of last ch-9 sp, tr in last sc – 2 tr, 6 sc, and 3 ch-4 sps.

**Row 5:** Ch 1, turn, sc in first st, ch 9, sl st in last sc made, sc in next st, \*ch 4, sk next ch-4 sp, sc in next sc, (ch 9, sl st in last sc made) twice, sc in next sc; rep

For thousands of free patterns, visit our website [www.LionBrand.com](http://www.LionBrand.com)

To order visit our website [www.lionbrand.com](http://www.lionbrand.com) or call: (800) 258-YARN (9276) any time!

Copyright ©1998-2016 Lion Brand Yarn Company, all rights reserved.

No pattern or other material may be reproduced -- mechanically, electronically, or by any other means, including photocopying - without written permission of Lion Brand Yarn Company.

from \* to last ch-4 sp, ch 4, sk last ch-4 sp, sc in next sc, ch 9, sl st in last sc made, sc in top of beg ch-4 – 8 sc, 3 ch-4 sps, and 6 ch-9 sps.

Rep Rows 2-5 until piece measures about 66 1/2 in. (169 cm) from beg, end with a Row 4 as the last row you work.

**Last Row:** Ch 1, turn, sc in first 2 sts, \*ch 4, sk next ch-4 sp, sc in next 2 sc; rep from \* to last ch-4 sp, ch 4, sk last ch-4 sp, sc in next sc, sc in top of beg ch-4 – 8 sc and 3 ch-4 sps.

Fasten off.

### **FINISHING**

Weave in ends.

### **ABBREVIATIONS**

beg = begin(ning)

ch = chain

ch-sp(s) = chain space(s) previously made

rep = repeat

sc = single crochet

sk = skip

sl st = slip stitch

st(s) = stitch(es)

tr = treble (triple) crochet

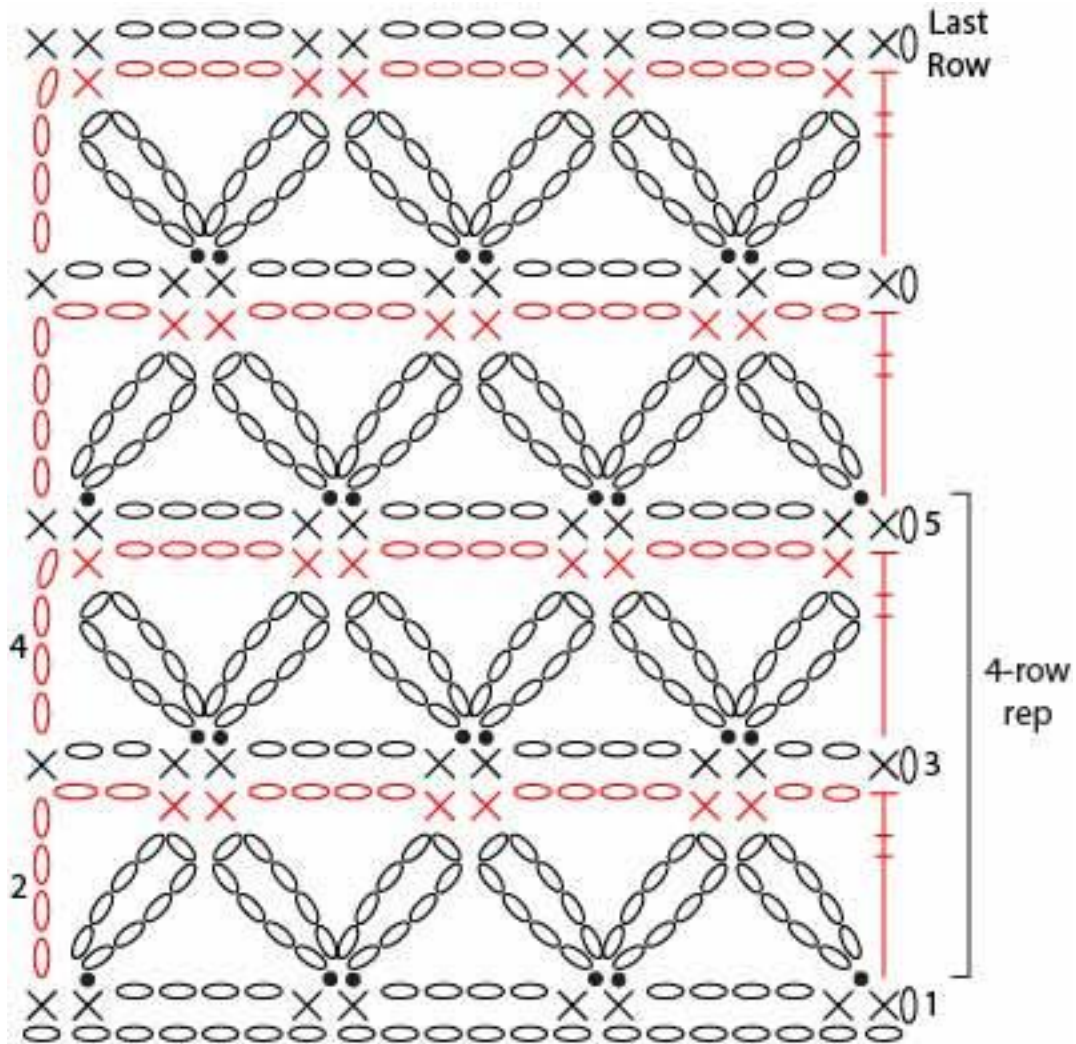
*Every effort has been made to produce accurate and complete instructions. We cannot be responsible for variance of individual knitters or crocheters, human error, or typographical mistakes.*

For thousands of free patterns, visit our website [www.LionBrand.com](http://www.LionBrand.com)

To order visit our website [www.lionbrand.com](http://www.lionbrand.com) or call: (800) 258-YARN (9276) any time!

Copyright ©1998-2016 Lion Brand Yarn Company, all rights reserved.

No pattern or other material may be reproduced -- mechanically, electronically, or by any other means, including photocopying - without written permission of Lion Brand Yarn Company.



**KEY**

- = slip stitch (sl st)
- = chain (ch)
- × = single crochet (sc)
- ⋈ = treble (triple) crochet (tr)